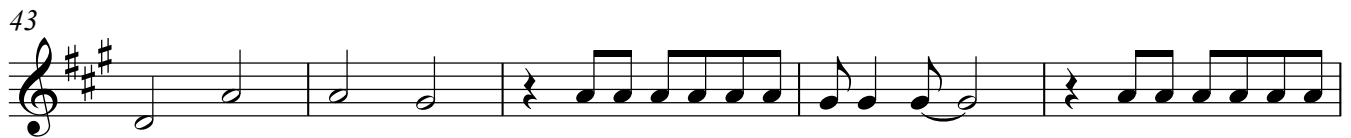
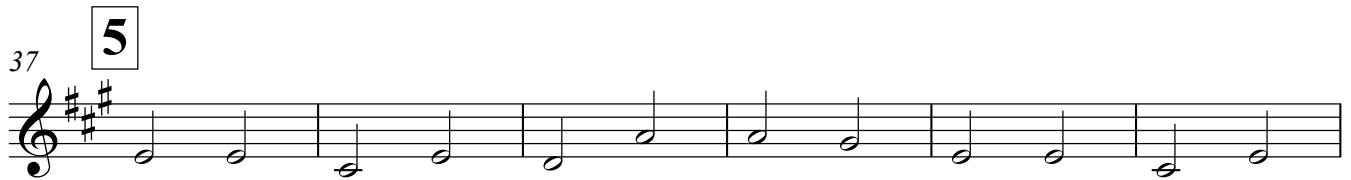
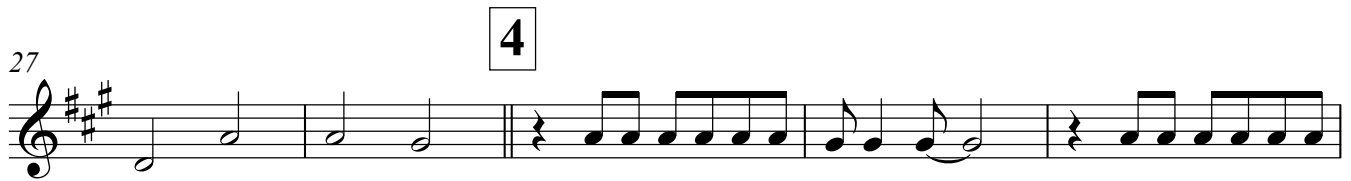
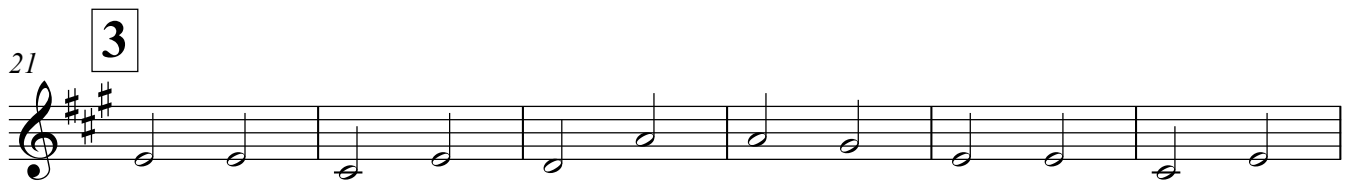
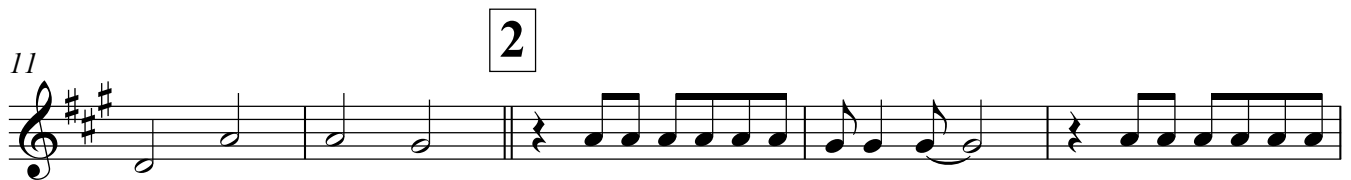
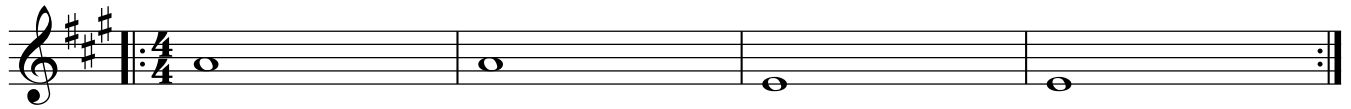


15. Only You



C Euphonium

48

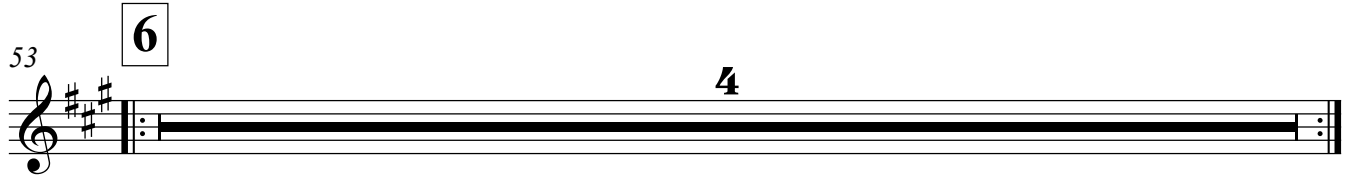


A musical staff in treble clef with a key signature of three sharps (F#, C#, G#). The staff contains a sequence of notes: a quarter note G4, a quarter note A4, a quarter note B4, a quarter note C5, a quarter note B4, a quarter note A4, a quarter note G4, a quarter rest, a quarter note G4, a quarter note A4, a quarter note B4, a half note C5, and a half note B4.

53

6

4



A musical staff in treble clef with a key signature of three sharps (F#, C#, G#). The staff begins with a repeat sign. A box containing the number '6' is positioned above the first measure. The staff contains a single whole note G4. A '4' is written above the staff towards the right. The staff ends with a double bar line and repeat dots.